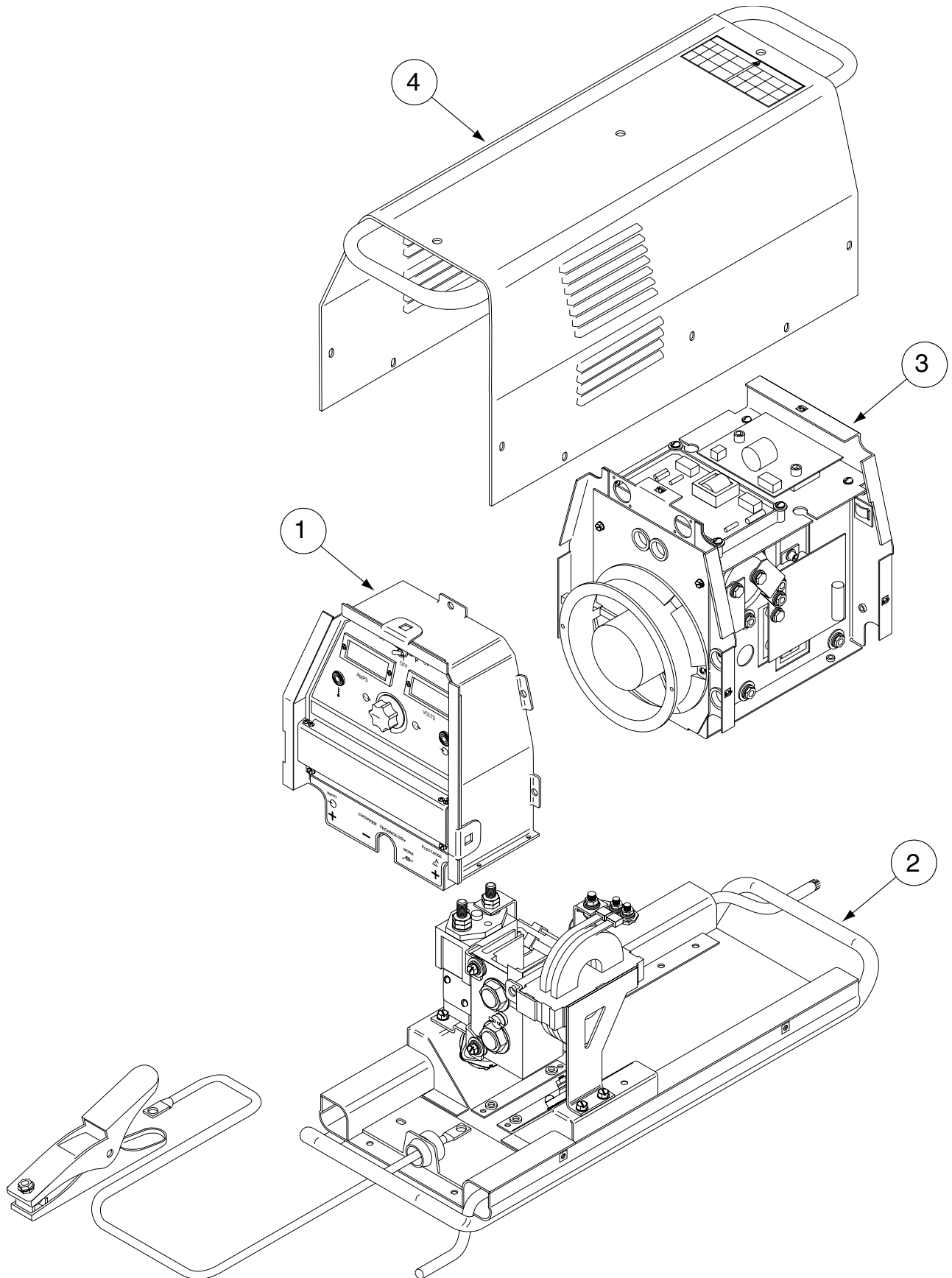


PARTS LIST FOR

MX 350

ILLUSTRATION OF SUB-ASSEMBLIES



OPTIONAL EQUIPMENT LISTING

Miscellaneous Options Available for you machine are listed below:

Indicates a change this printing.

DESCRIPTION	PART NUMBER
Distribution BoxOrder K1736-1
Twist-Mate Cable Plug Kit (1/0-2/0)Order K852-70
Twist-Mate Cable Plug Kit (2/0-3/0)Order K852-95
Twist-Mate Cable Receptacle Kit (1/0-2/0)Order K1759-70
Twist-Mate Cable Receptacle Kit (2/0-3/0)Order K1759-95
(B-2/0-22-208-K) 2/0 Cable, 22 inches long with .5 inch hole lug & cut off end.CL012705

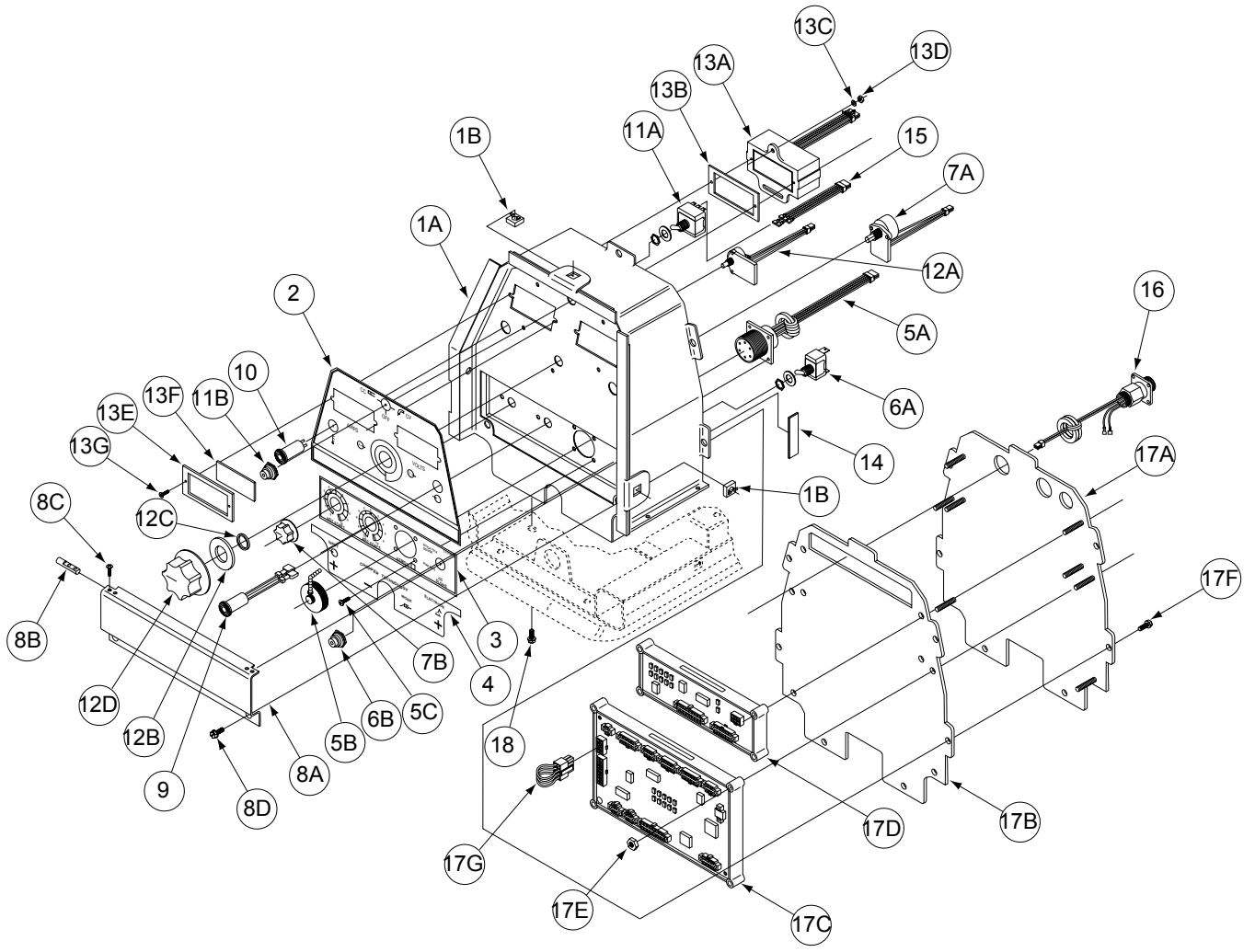
Indicates a change this printing.

Use only the parts marked "x" in the column under the heading number called for in the model index page.

Recommended Spare Part are Highlighted Bold

DESCRIPTION	PART NO.	QTY.	1	2	3	4	5	6	7	8	9
Tunnel to Control Box Wire Harness	L11145	1	X								
Control Box Harness	L11060	1	X								
Tunnel Wiring Harness	L11128	1	X								
Warning Decal	T13086-164	1	X								

Case Front Assembly



Indicates a change this printing.

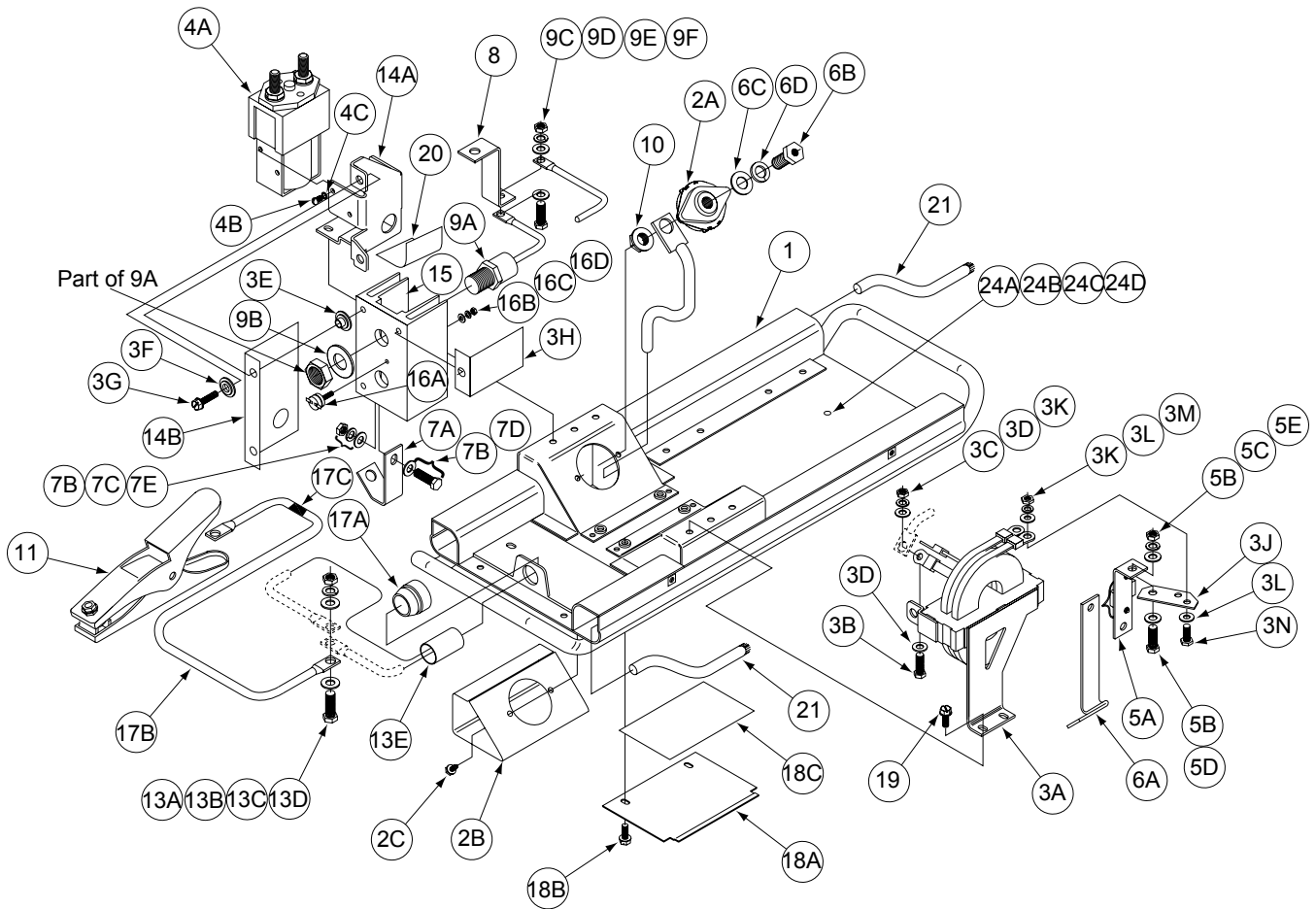
Use only the parts marked "x" in the column under the heading number called for in the model index page.

Recommended Spare Parts are Highlighted in Bold

ITEM	DESCRIPTION	PART NO.	QTY.	1	2	3	4	5	6	7	8	9
	Case Front Assembly, Includes:	G3621-1	1	X								
1A	Case Front/Control Box Welded Assembly	L11094	3	X								
1B	Nut Retainer (Not part of Assembly)	T10097-3	3	X								
2	Nameplate-Upper (Buy 2, 3, & 4 as one package)	L11560	1	X								
3	Nameplate-Recess Panel											
4	Nameplate-Lower											
5A	Amphenol & Lead Assembly	S13100-225	1	X								
5B	Cable Connector Cap	S17062-2	1	X								
5C	Self Tapping Screws	S8025-96	4	X								
6A	SPDT Switch	T13562	1	X								
6B	Sealing Boot	S22061-4	1	X								
7A	Plug & Lead Assembly (Hot Start/Arc Force) P8/P9	S18250-632	2	X								
7B	Knob	T13639-3	2	X								
8A	Recess Panel Cover	M19336	1	X								
8B	Hinge Pin	S24593	2	X								
8C	#4-40 x .375SS	CF000389	4	X								
8D	1/4-20 x .50SHWHS	S9225-68	2	X								
9	Pilot Light & Terminal Assembly (Green)	S24691	1	X								
10	Pilot Light (Yellow) (Thermal Light)	T13534-6	1	X								
11A	Switch (Center Off)	T10800-22	1	X								
11B	Sealing Boot	S22061-4	1	X								
12A	Plug & Lead Assembly (P7)	S18250-631	1	X								
12B	Shaft Seal	T14034	1	X								
12C	Spacer	T7028-241	1	X								
12D	Knob	T10491	1	X								
13A	Meter Housing Assembly	L11160	2	X								
13B	Control Box Seals (Meter Housing)	S24630	2	X								
13C	Plain Washer	S9262-97	4	X								
13D	#6-32 Hex Nut	CF000005	4	X								
13E	Meter Bezel	M19368	2	X								
13F	Lens	T14807-9	2	X								
13G	#4-40 x .375SS	CF000389	4	X								
14	Control Box Seals (Bend Relief Seals)	CI001440	7	X								
15	Plug & Lead Assembly (P2)	S18250-635	1	X								
16	Plug & Lead Assembly (P6, J21)	S18250-648	1	X								
17A	Control Box Rear Panel	M19342	1	X								
17B	Control Box Seals (Rear Panel)	L11163-A	1	X								
17C	Weld Control P.C. Board Assembly	G3660-[]	1	X								
17D	Peripheral P. C. Board Assembly	G3662-[]	1	X								
17E	#10-24 Hex Lock Nut	T9187-13	8	X								
17F	Hex Head Fastener #10-24 x .500 Hex Head Cap Screw	CF000371	7	X								
17G	Plug & Lead Assembly (P3) (Not part of Assembly)	S18250-647	1	X								
18	Thread Forming Screws	S9225-68	2	X								

Note: When ordering new printed circuit boards indicate the dash number [] of the "Old" board that is to be replaced. This will aid Lincoln in supplying the correct and latest board along with any necessary jumpers or adapters. The dash number brackets [] have purposely been left blank so as to eliminate errors, confusion and updates.

Base Module Assembly



Indicates a change this printing.

Use only the parts marked "x" in the column under the heading number called for in the model index page.

Recommended Spare Parts are Highlighted in Bold

ITEM	DESCRIPTION	PART NO.	QTY.	1	2	3	4	5	6	7	8	9
	Base Module Assembly, Includes:	G3630-1	1	X								
1	Base Welded Assembly	L11085-1	1	X								
2A	Output Terminal Assembly	S16656-4	2	X								
2B	Stud Box Insulation	S24696	2	X								
2C	Self Tapping Screw	S8025-91	4	X								
3A	Choke Welded Assembly	L11119	1	X								
3B	1/4-20 x .625 Hex Head Cap Screw	CF000013	2	X								
3C	Lock Washer	E106A-2	2	X								
3D	Plain Washer	S9262-98	2	X								
3E	Insulator	T11267-A	1	X								
3F	Insulator	T11267-B	1	X								
3G	Thread Forming Screw	S9225-17	1	X								
3H	Heat Sink Insulation	S24716	1	X								
3J *	Choke Tab	S24681	1	X								
3K *	1/4-20 Hex Nut	CF000017	2	X								
3L *	Plain Washer	S9262-98	4	X								
3M *	Lock Washer	E106A-14	2	X								
3N *	1/4-20 x .75 Hex Head Cap Screw	CF000014	2	X								
	* Separately mounted only for item 3A manufactured before 9/1999.											
4A	Contactors & Terminal Assembly	S24690	1	X								
4B	Round Head Screw	CF000113	4	X								
4C	Lock Washer	E106A-1	4	X								
5A	Shunt & Lead Assembly	S21170-2	1	X								
5B	Plain Washer	S9262-30	4	X								
5C	Lock Washer	E106A-14	2	X								
5D	5/16-18 x .750 Hex Head Cap Screw	CF000040	2	X								
5E	5/16-18 Hex Nut	CF000029	2	X								
6A	Shunt Strap	M19392	1	X								
6B	1/2-13 x .75 Hex Head Cap Screw	CF000020	1	X								
6C	Plain Washer	S9262-1	1	X								
6D	Lock Washer	E106A-15	1	X								
7A	Input Stud to Diode Heat Sink Strap	S24663	1	X								
7B	Plain Washer	S9262-30	2	X								
7C	Lock Washer	E106A-14	1	X								
7D	5/16-18 x .750 Hex Head Cap Screw	CF000040	1	X								
7E	5/16-18 Hex Nut	CF000029	1	X								
7F	1/2-13 x .75 Hex Head Cap Screw (Not Shown)	CF000020	1	X								
7G	Plain Washer (Not Shown)	S9262-1	1	X								
7H	Lock Washer (Not Shown)	E106A-15	1	X								
8	Contactors Strap	S24684	1	X								
9A	Diode Stud	M9661-31	2	X								
9B	Spring Washer	T12735	2	X								
9C	Plain Washer	S9262-30	2	X								
9D	Lock Washer	E106A-14	1	X								
9E	5/16-18 x 1.00 Hex Head Cap Screw	CF000062	1	X								
9F	5/18 Hex Nut	CF000029	1	X								
10	1/2-13 Hex Flange Nut Output Stud Nut	T3960	2	X								
11	Insulated Work Clip	M19394	1	X								
12A	By-Pass P.C. Board Assembly (Not Shown)	M19510-[]	1	X								

Indicates a change this printing.

Use only the parts marked "x" in the column under the heading number called for in the model index page.

Recommended Spare Parts are Highlighted in Bold

ITEM	DESCRIPTION	PART NO.	QTY.	1	2	3	4	5	6	7	8	9
12B	#8-32 x .50 Round Head Screw	CF000033	2	X								
12C	1/4-20 x .50 Hex Head Cap Screw (Not Shown)	CF000012	1	X								
12D	Plain Washer (Not Shown)	S9262-98	1	X								
12E	Lock Washer (Not Shown)	E106A-2	1	X								
13A	5/16-18 x 1.00 Hex Head Cap Screw	CF000062	1	X								
13B	Plain Washer	S9262-30	2	X								
13C	Lock Washer	E106A-14	1	X								
13D	5/16-18 Hex Nut	CF000029	1	X								
13E	Sleeving E1159/B-.750-3.50	CS001069	1	X								
14A	Contactor Bracket	M19360	1	X								
14B	Heat Sink Insulation	S24717	1	X								
14C	Insulator (Not Shown)	T11267-A	2	X								
14D	Insulator (Not Shown)	T11267-B	2	X								
14E	Thread Forming Screw (Not Shown)	S9225-17	2	X								
15	Diode Heat Sink	M19474-1	1	X								
16A	Thermostat	T13359-2	1	X								
16B	Plain Washer	S9262-3	1	X								
16C	Lock Washer	E106A-13	1	X								
16D	#6-32 Hex Nut	CF000005	1	X								
17A	Lead Grommet (Straight thru type)	T9274-4	1	X								
17B	Ground/Work Lead	S11609-26	1	X								
17C	Warning Decal	T13086-164	1	X								
18A	Stud Cover	M19357	2	X								
18B	Thread Forming Screw	S9225-68	2	X								
18C	Insulation E2521/1-3.00-4.50	CI001446	2	X								
19	Thread Forming Screw	S9225-68	2	X								
20	Insulation	CI001372	1	X								
21	2/0 Cable (22" Long)	CL012705	2	X								
22	Decal - Electrode (Not Shown)	T13086-160	1	X								
23	Decal -Input (Not Shown)	T13086-161	1	X								
24A	5/16-18 x .75 Hex Head Cap Screw	CF000040	1	X								
24B	Plain Washer	S9262-30	2	X								
24C	Lock Washer	E106A-14	1	X								
24D	Decal-Earth Ground	T13086-165	1	X								
25	Imbalance Protector Module (Not Shown)(Code 10736 only)	S24996	1	X								

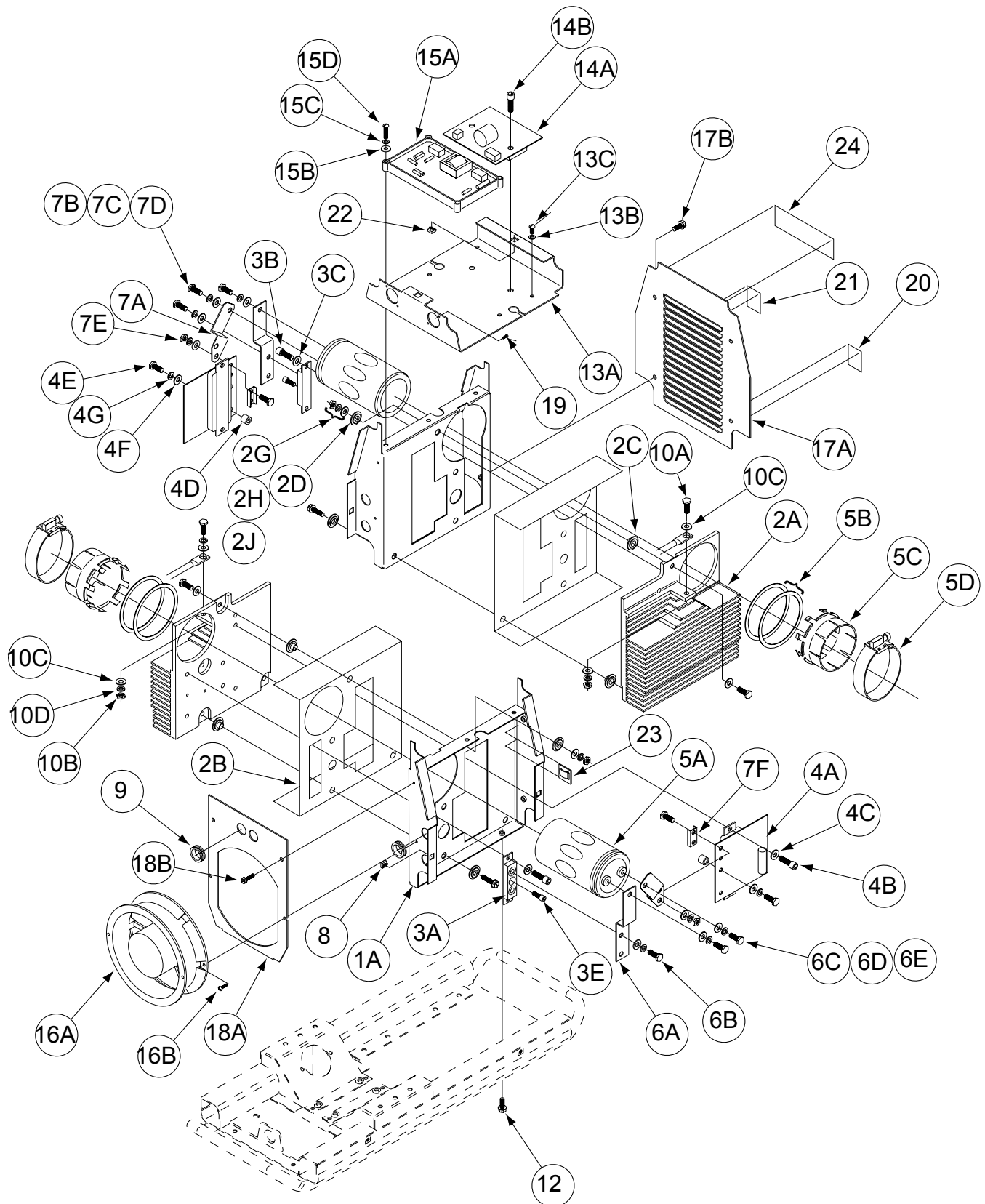
Note: When ordering new printed circuit boards indicate the dash number [] of the "Old" board that is to be replaced. This will aid Lincoln in supplying the correct and latest board along with any necessary jumpers or adapters. The dash number brackets [] have purposely been left blank so as to eliminate errors, confusion and updates.

NOTES

MX 350

Red-D-Arc

Tunnel Assembly



Indicates a change this printing.

Use only the parts marked "x" in the column under the heading number called for in the model index page.

Recommended Spare Parts are Highlighted in Bold

ITEM	DESCRIPTION	PART NO.	QTY.	1	2	3	4	5	6	7	8	9
	Tunnel Assembly, Includes:	G3622-1	1	X								
1	Left Chopper Assembly, Includes:	L11081	1	X								
1	Right Chopper Assembly, Includes:	L11080	1	X								
1A	Left Heat Sink Tunnel	L11077	1	X								
1A	Right Heat Sink Tunnel	L11076	1	X								
2A	Chopper Heat Sink	L11075	1	X								
2B	Heat Sink Insulation	M19331	1	X								
2C	Insulator	T11267-A	4	X								
2D	Insulator	T11267-B	4	X								
2E	Thread Forming Screw (Not Shown)	S9225-17	4	X								
2F	1/4-20 x 1.00 Hex Head Cap Screw (Not Shown)	CF000015	1	X								
2G	1/4-20 Hex Nut	CF000017	1	X								
2H	Lock Washer	E106A-2	1	X								
2J	Plain Washer	S9262-98	1	X								
3A	Diode	M15454-11	1	X								
3B	Socket Head Cap Screw (1/4-20 x .625)	T9447-9	2	X								
3C	Plain Washer	S9262-98	2	X								
3D	Spring Washer	T12735-4	2	X								
3E	Socket Head Cap Screw (#8-32 x .375)	T9447-21	1	X								
4A	Chopper P.C. Board Assembly	L11038-[]	1	X								
4B	Socket Head Cap Screw (1/4-20 x .625)	T9447-9	2	X								
4C	Lock Washer	E106A-2	2	X								
4D	Copper Spacer	S23730	2	X								
4E	1/4-20 x 1.00 Hex Head Cap Screw	CF000015	2	X								
4F	Plain Washer	S9262-98	2	X								
4G	Lock Washer	E106A-2	2	X								
5A	Capacitor	S13490-172	1	X								
5B	Capacitor Washer	S24580	2	X								
5C	Capacitor Bracket	M16737	1	X								
5D	Hose Clamp	S10888-33	1	X								
6A	Capacitor (-) to Diode Strap	S24549	1	X								
6B	1/4-20 x .50 Hex Head Cap Screw	CF000012	2	X								
6C	Hex Head Cap Screw (1/4-28 x .625)	T8833-51	1	X								
6D	Lock Washer	E106A-2	3	X								
6E	Plain Washer	S9262-98	5	X								
7A	Capacitor (+) to Chopper P.C.B. Strap	S24548	1	X								
7B	1/4-20 x .75 Hex Head Cap Screw	CF000014	2	X								
7C	Plain Washer	S9262-98	3	X								
7D	Lock Washer	E106A-2	3	X								
7E	1/2-20 Hex Nut	CF000017	2	X								
7F	Chopper Locking Plate	S24718	1	X								
8	Nut Retainer	T10097-3	2	X								
9	Grommet	S10255-18	2	X								
10A	1/4-20 x .750 Hex Head Cap Screw	CF000014	1	X								
10B	1/4-20 Hex Nut	CF000017	1	X								
10C	Plain Washer	S9262-98	2	X								
10D	Lock Washer	E106A-2	1	X								
11	Diode (Stud Mounted) (Not Shown)	T12705-19	1	X								
12	Thread Forming Screw	S9225-68	4	X								
13A	Heat Sink Tunnel Lid	L11316	1	X								

Indicates a change this printing.

Use only the parts marked "x" in the column under the heading number called for in the model index page.

Recommended Spare Parts are Highlighted in Bold

ITEM	DESCRIPTION	PART NO.	QTY.	1	2	3	4	5	6	7	8	9
13B	Lock Washer	E106A-1	2	X								
13C	#10-24 x .375 Round Head Screw	CF000061	2	X								
13D	Warning Decal (Not Shown)	T13086-163	2	X								
14A	DC Buss Power Supply Assembly	L11078-[]	1	X								
14B	Socket Head Cap Screw (1/4-20 x .750)	T9447-108	2	X								
14C	Lock Washer (Not Shown)	T9695-17	2	X								
14D	Insulation (Not Shown)	S24782	1	X								
15A	Analog Power Supply P.C.B. Assembly	M19423-[]	1	X								
15B	Plain Washer	S9262-27	4	X								
15C	Lock Washer	E106A-1	4	X								
15D	#10-24 x 1.00 Round Head Screw	CF000038	4	X								
16A	Fan & Terminal Assembly	S24689	1	X								
16B	Self Tapping Screw	S8025-14	2	X								
17A	Case Back Panel	L11082-1	1	X								
17B	Thread Forming Screw	S9225-68	4	X								
18A	Air Baffle	M19361	1	X								
18B	Self Tapping Screw	S8025-91	2	X								
19	Self Tapping Screw	S8025-96	4	X								
20	Decal - Electrode	T13086-160	1	X								
21	Deca - Input	T13086-161	1	X								
22	Nut Retainer	T10097-3	2	X								
23	Adhesive Backed Cord Clip	T14584	2	X								
24	Rating Plate	S24596	1	X								
25	Plug & Lead Assembly (P23 & P24) (Not Shown)	S18250-636	1	X								

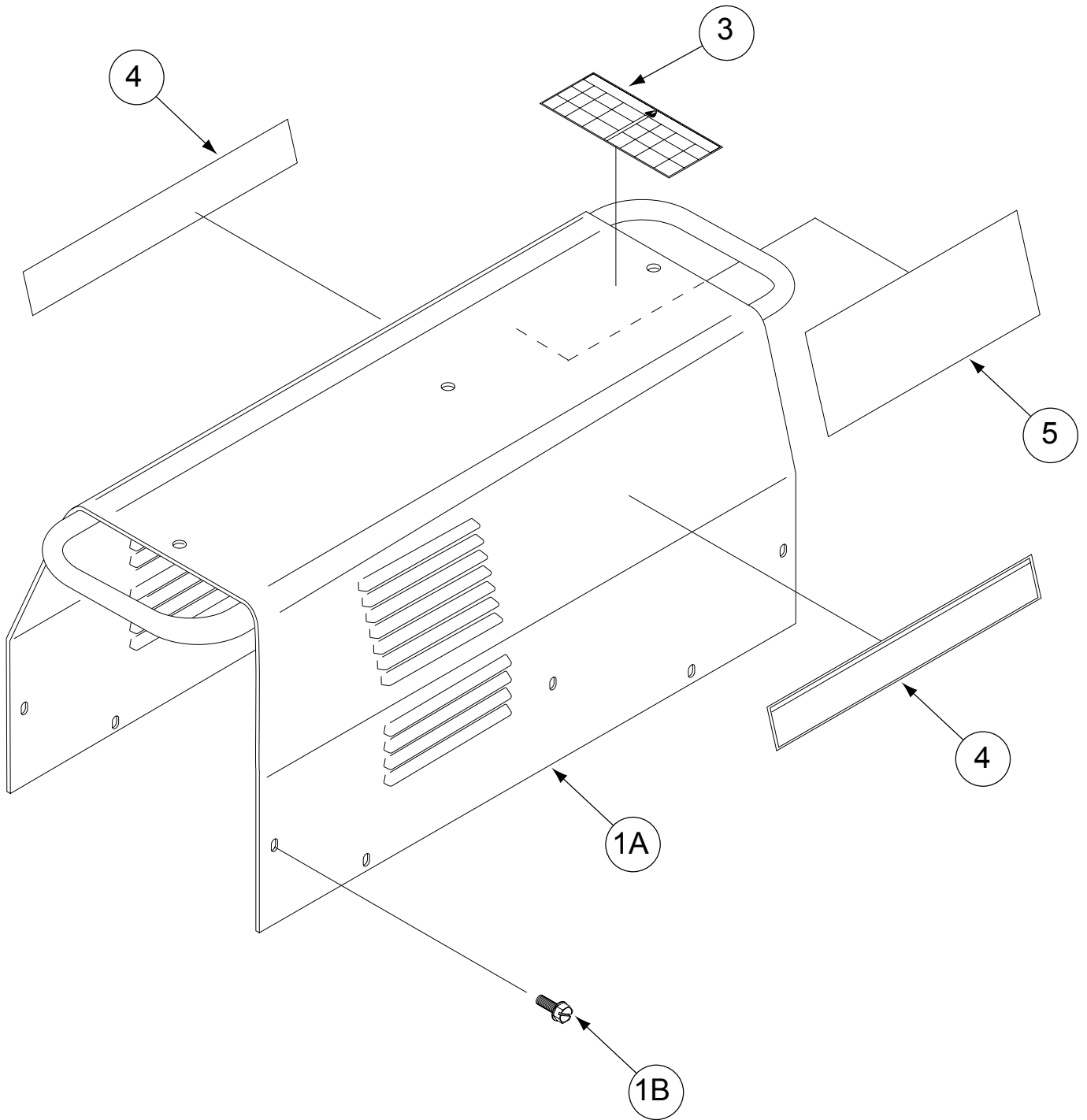
Note: When ordering new printed circuit boards indicate the dash number [] of the "Old" board that is to be replaced. This will aid Lincoln in supplying the correct and latest board along with any necessary jumpers or adapters. The dash number brackets [] have purposely been left blank so as to eliminate errors, confusion and updates.

NOTES

MX 350

Red-D-Arc

Cover Assembly



Indicates a change this printing.

Use only the parts marked "x" in the column under the heading number called for in the model index page.

Recommended Spare Parts are Highlighted in Bold

ITEM	DESCRIPTION	PART NO.	QTY.	1	2	3	4	5	6	7	8	9
1A	Wraparound Assembly	L11092-1	1	X								
1B	Thread Forming Screw	S9225-68	13	X								
3	Warning Decal	L8064-1	1	X								
4	Side Decal (Right & Left)	L11561	1	X								
5	Insulation (E2521/1-.010-4.25-8.00)	CI001447	2	X								
6	Wiring Diagram (Not Shown)	G3943	1	X								

NOTES

MX 350

Red-D-Arc